

EQ Building Photo Cards Key

Soft first story failure

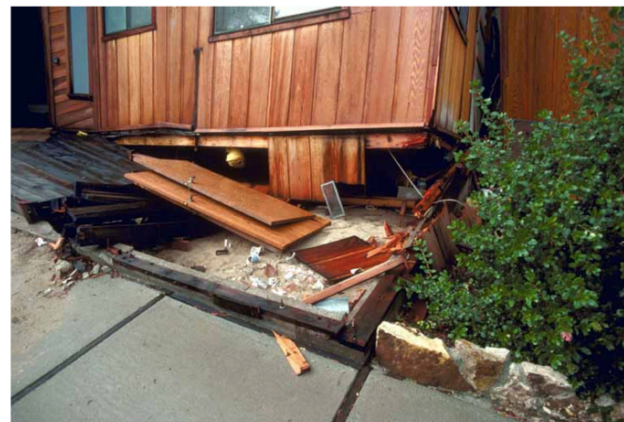


Soft first story failure



Weak story failure, Kobe, 1995

Building shifted off foundation





Column failure

Bending



Bending

Inadequate connection to uprights



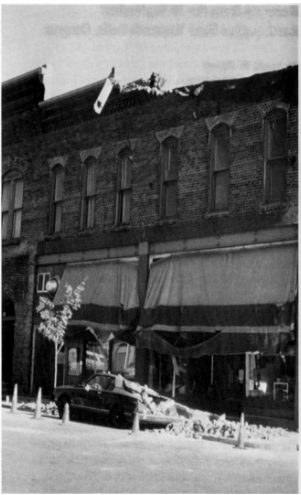
High center of mass, resonance



Falling objects



Falling objects
partial wall
collapse



Falling objects, partial wall collapse



Liquefaction, ground failure



Liquefaction, ground failure

